

# IP Zoom Module

CCDCAM IP Zoom Module has an efficient automatic synchronous focusing algorithm, enabling the product to have the ability to synchronize and zoom through the entire process, ensuring that images are always clear. Suitable for intelligent robots, intelligent machine vision, and intelligent security industries.



### Key Features

- 1/2.8" Sony IMX307 CMOS Sensor
- With 10X optical zoom capability
- Color : 0.1Lux@F1.2 B/W : 0.01Lux@F1.2
- Smart 2D/3D noise reduction algorithms, AE exposure algorithms, night images clean and refreshing
- Support H.265/H.264 Main profile/M-JPEG encoded
- Maximum resolution up to 1920x1080@30fps
- Support for motion detection zone and privacy zone settings
- Support 254 preset positions, 4 preset positions for cruise and horizontal scanning
- Support standard ONVIF 2.4 protocol

## HT7210AM

### 2MP Network 10X Optical Zoom Module

#### Specification

Image Sensor	1/2.8" 2MP IMX307 CMOS
WDR	68dB
S/N Ration	≥45dB ( AGC OFF )
Exposure Mode	Program mode, shutter mode
Electronic Shutter	1/2 - 1/20,000s , Slow shutter support
D/N Mode	Auto ICR filter, fixed color, external
Focus Distance	4.7mm -47mm ( F1.6-F2.5 )
Field of View Angle	70.9° ( near ) / 7.1° ( far )
Video Compression	H.265 / H.264 / M-JPEG
Audio Compression	G711 , PCM
Main Stream	1920x1080 /1280x960/1280x720@30fps
Sub Stream	640x480/480x360/352x288@30fps
SD Storage	TF card storage ( optional )
Network Interface	1ch 10/100Base Ethernet , RJ45 interface
Power	DC12V
Size	63x49x39mm
Work Temperature	-30°C ~60°C
Work Humidity	10%-90% RH ( non-condensing )

#### Application Scenario



Government



Square



School



CBD



**Key Features**

- 1/2.8" Sony IMX335 CMOS Sensor
- With 10X optical zoom capability
- Color : 0.05Lux@F1.2 B/W : 0.01Lux@F1.2
- Smart 2D/3D noise reduction algorithms, AE exposure algorithms, night images clean and refreshing
- Support H.265/H.264 Main profile/M-JPEG encoded
- 2592x1944 @15fps, 2592x1520@22fps, 2304 x1296@30fps
- Support for motion detection zone and privacy zone settings
- Support 254 preset positions, 4 preset positions for cruise and horizontal scanning
- Support standard ONVIF 2.4 protocol

**HT7510AM**

5MP Network 10X Optical Zoom Module

**Specification**

Image Sensor	1/2.8" 5MP IMX335 CMOS
WDR	73.7dB
S/N Ration	≥50dB ( AGC OFF )
Exposure Mode	Program mode, shutter mode
Electronic Shutter	1/2 - 1/20,000s , Slow shutter support
D/N Mode	Auto ICR filter, fixed color, external
Focus Distance	4.7mm -47mm ( F1.6-F2.5 )
Field of View Angle	70.9° ( near ) / 7.1° ( far )
Video Compression	H.265 / H.264 / M-JPEG
Audio Compression	G711, PCM
Main Stream	2592x1944@15fps, 2592x1520@22fps
Sub Stream	640x480/480x360/352x288@30fps
SD Storage	TF card storage ( optional )
Network Interface	1ch 10/100Base Ethernet , RJ45 interface
Power	DC12V
Size	63x49x39mm
Work Temperature	-30°C ~60°C
Work Humidity	10%-90% RH ( non-condensing )

**Application Scenario**



Government

Square

School

CBD



**Key Features**

- 1/2.8" Sony IMX335 CMOS Sensor
- With 36X optical zoom capability
- Color : 0.05Lux@F1.2 B/W : 0.01Lux@F1.2
- Smart 2D/3D noise reduction algorithms, AE exposure algorithms, night images clean and refreshing
- Support H.265/H.264 Main profile/M-JPEG encoded
- Max resolution up to 2592x1944@30fps
- Support for motion detection zone and privacy zone settings
- Support 254 preset positions, 4 preset positions for cruise and horizontal scanning
- Support standard ONVIF 2.4 protocol

**HT7536D**

5MP Network 36X Optical Zoom Module

**Specification**

Image Sensor	1/2.8" 5MP IMX335 CMOS
WDR	80dB
S/N Ration	≥50dB ( AGC OFF )
Exposure Mode	Program mode, shutter mode
Electronic Shutter	1/2 - 1/20,000s , Slow shutter support
D/N Mode	Auto ICR filter, fixed color, external
Focus Distance	4.6mm-167mm(F1.6~F4.8)
Field of View Angle	61.2° ( near ) /2.32° ( far )
Video Compression	H.265 / H.264 / M-JPEG
Audio Compression	G711 , PCM
Main Stream	2592x1944@30fps
Sub Stream	640x480/480x360/352x288@30fps
SD Storage	TF card storage ( optional )
Network Interface	1ch 10/100Base Ethernet , RJ45 interface
Power	DC 12V
Size	97x62x51mm
Work Temperature	-30°C ~60°C
Work Humidity	10%-90% RH ( non-condensing )

**Application Scenario**



Government

Square

School

CBD

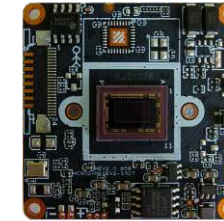
# IP Camera Module

CCDCAM IP Camera Module use low illumination Sony image sensor, which provides excellent low illumination performance and clearer and more detailed images, making it suitable for various scenarios.

Supports advanced H.265 Main profile encoding technology. With the same image quality, the compressed code stream is twice that of H.264 encoding, enabling lower bit rates and higher definition image quality. At the same time, this product is compatible with H.264/MJPEG encoding, and can be accessed to mainstream H.264 encoding back-end devices on the industry.

More expansion function interfaces are reserved. through expansion board, IO alarms, SD cards, and corresponding functions can be supported, and users can adjust themselves according to their needs.

Good protocol compatibility, supports the standard ONVIF protocol, and can provide a



## Key Features

- 1/2.8" 2MP CMOS Sony IMX307 Sensor
- Maximum resolution up to 1920x1080@30fps
- True Day/Night, 3D DNR, Digital WDR
- Support Motion Detection
- Support the P2P on Android, IOS
- Support two way audio
- Support ONVIF2.4
- H.265/H.264/MJ-PEG
- Support TCP/IP/HTTP/NTP/DHCP/SMTP/RTSP

## IM20S07

### 2MP Low-Illumination HD Network Camera Module

#### Specification

Image Sensor	1/2.8" 2MP IMX307 CMOS
Min.Illumination	Color : 0.1Lux , B/W : 0.01Lux
AGC	Auto/Manual
S/N Ratio	≥45dB ( AGC OFF )
Shutter Speed	1/2 - 1/20,000s , Slow shutter support
Wide Dynamic Range	Digital WDR
Exposure Mode	Auto/Manual/shutter mode
White Balance	Auto/Manual /ATW/Indoor/Outdoor/ lamp
Day & Night	External control ( IR Cut Filter )
Video Compression	H.265/H.264 Main Profile /M-JPEG
Audio Compression	G711 , PCM
Main Stream	1920×1080/1280×960/1280×720@30fps
Sub Stream	640×480/480×360/352×288/176×144@30fps
Network Interface	1ch 10/100Base Ethernet , RJ45 interface
Power	DC 12V
Size	38x38mm
Work Temperature	-10°C ~50°C
Work Humidity	≤90% RH ( non-condensing )

#### Application Scenario



Family



Office



Shop



Supermarket



**Key Features**

- 1/2.8" 5MP CMOS Sony IMX335 Sensor
- Maximum resolution up to 2592x1944@15fps
- True Day/Night, 3D DNR, Digital WDR
- Support Motion Detection
- Support the P2P on Android, IOS
- Support two way audio
- Support ONVIF2.4
- H.265/H.264/MJ-PEG
- Support TCP/IP/HTTP/NTP/DHCP/SMTP/RTSP

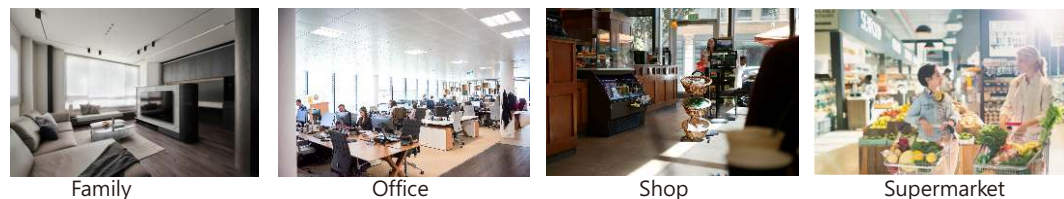
**IM50S35**

5MP STARVIS HD Network Camera Module

**Specification**

Image Sensor	1/2.8" 5MP IMX335 CMOS
Min.Illumination	Color : 0.05Lux , B/W : 0.01Lux
AGC	Auto/Manual
S/N Ratio	≥50dB ( AGC OFF )
Shutter Speed	1/2 - 1/20,000s , Slow shutter support
Wide Dynamic Range	Digital WDR, ≥73.7dB
Exposure Mode	Auto/Manual/shutter mode
White Balance	Auto/Manual /ATW/Indoor/Outdoor/ lamp
Day & Night	External control ( IR Cut Filter )
Video Compression	H.265/H.264 Main Profile /M-JPEG
Audio Compression	G711 , PCM
Main Stream	2592×1944@15fps, 2592×1520@22fps
Sub Stream	640×480/480×360/352×288/176×144@30fps
Network Interface	1ch 10/100Base Ethernet , RJ45 interface
Power	DC 12V@0.1A
Size	38x38mm
Work Temperature	-10°C ~50°C
Work Humidity	≤90% RH ( non-condensing )

**Application Scenario**

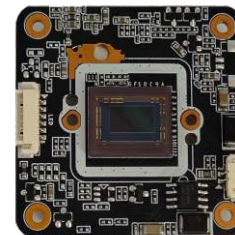


Family

Office

Shop

Supermarket



**Key Features**

- 1/1.8" 4MP CMOS Sony IMX347 Sensor
- Maximum resolution up to 2592x1944@25fps
- True Day/Night, 3D DNR, Digital WDR
- Support Motion Detection
- Support AI human detection, vehicle type detection, non-motor vehicle detection
- Support CDS control and PWM control
- Support the P2P on Android, IOS
- Support two way audio
- Support ONVIF2.6
- Support TCP/IP/HTTP/NTP/DHCP/SMTP/RTSP

**IMA40K45**

4MP AI Black Light HD Network Camera Module

**Specification**

Image Sensor	1/1.8" 4MP IMX347 CMOS
Min.Illumination	Color : 0.01Lux , B/W : 0.001Lux
AGC	Auto/Manual
S/N Ratio	≥50dB ( AGC OFF )
Shutter Speed	1/2 - 1/20,000s , Slow shutter support
Wide Dynamic Range	Digital WDR
Exposure Mode	Auto/Manual/shutter mode
White Balance	Auto/Manual /ATW/Indoor/Outdoor/ lamp
Day & Night	External control ( IR Cut Filter )
Video Compression	H.265+/H.265/H.264
Audio Compression	G711, PCM
Main Stream	2592×1944@25fps, 2688 × 1520@30fps
Sub Stream	720×480/D1/VGA/640×360@30fps
Network Interface	1ch 10/100Base Ethernet , RJ45 interface
Power	DC 12V
Size	38x38mm
Work Temperature	-30°C ~85°C
Work Humidity	≤90% RH ( non-condensing )

**Application Scenario**



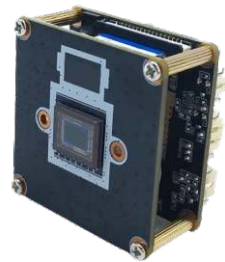
Family

Office

Shop

Supermarket





**Key Features**

- 1/2.8" 8MP CMOS Sony IMX415 Sensor
- Maximum resolution up to 3840x2160@30fps
- True Day/Night, 3D DNR, Digital WDR
- Support Motion Detection
- Support AI human detection, vehicle detection
- Support the P2P on Android, IOS
- Support two way audio
- Support ONVIF2.6
- Support TCP/IP/HTTP/NTP/DHCP/SMTP/RTSP



**Key Features**

- 1/2.3" 12MP CMOS Sony IMX577 Sensor
- Maximum resolution up to 4000x3000@25fps
- True Day/Night, 3D DNR, Digital WDR
- Support Motion Detection
- Support out-of-bounds detection, enter area and leave intrusion detection
- Support CDS control and PWM control
- Support the P2P on Android, IOS
- Support two way audio
- Support ONVIF2.6
- Support TCP/IP/HTTP/NTP/DHCP/SMTP/RTSP

**IMA80G15**

4K Real-time AI HD Network Camera Module

**Specification**

Image Sensor	1/2.8" 8MP IMX415 CMOS
Min.Illumination	Color : 0.05Lux , B/W : 0.01Lux
AGC	Auto/Manual
S/N Ratio	≥50dB ( AGC OFF )
Shutter Speed	1/2 - 1/20,000s , Slow shutter support
Wide Dynamic Range	Digital WDR, ≥73.7dB
Exposure Mode	Auto/Manual/shutter mode
White Balance	Auto/Manual /ATW/Indoor/Outdoor/ lamp
Day & Night	External control ( IR Cut Filter )
Video Compression	H.265+/H.265/H.264
Audio Compression	G711
Main Stream	3840×2160/3072x2048/2592x1944@30fps
Sub Stream	640×480/480x360/352×288/176×144@30fps
Network Interface	1ch 10/100Base Ethernet , RJ45 interface
Power	DC12V
Size	38x38mm
Work Temperature	-10°C ~50°C
Work Humidity	≤90% RH ( non-condensing )

**Application Scenario**



Family

Office

Shop

Supermarket

**IMA12S**

12MP AI HD Network Camera Module

**Specification**

Image Sensor	1/2.3" 12MP IMX577 CMOS
Min.Illumination	Color : 0.01Lux , B/W : 0.005Lux
AGC	Auto/Manual
S/N Ratio	≥120dB ( AGC OFF )
Shutter Speed	1/2 - 1/20,000s , Slow shutter support
Wide Dynamic Range	Digital WDR
Exposure Mode	Auto/Manual/shutter mode
White Balance	Auto/Manual /ATW/Indoor/Outdoor/ lamp
Day & Night	External control ( IR Cut Filter )
Video Compression	H.265+/H.265/H.264
Audio Compression	G711
Main Stream	4000×3000@25fps, 3840 × 2160@30fps
Sub Stream	720×480/D1/VGA/640×360@30fps
Network Interface	1ch 10/100Base Ethernet , RJ45 interface
Power	DC 12V
Size	38x38mm
Work Temperature	-30°C ~85°C
Work Humidity	≤90% RH ( non-condensing )

**Application Scenario**



Family

Office

Shop

Supermarket